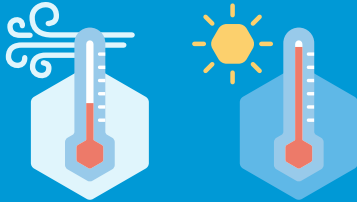


Weather Ready:

- 170 mph wind
- Mold, mildew and rot resistant
- A/C temperature controlled



LOCATION:

Tampa, FL

SIZE:

100 64 HD shelters

POPULATION SERVED:

Unhoused residents of Tampa

OPENING DATE:

April 20, 2023

FUNDING:

- Self-funding
- Community Development Block Grants (CDBG) for the city of Tampa
- Private donations

Taking Action To Inspire Hope and Support Unhoused Neighbors

In partnership with Catholic Charities, the City of Tampa came together to provide safe, storm-ready Pallet™ shelters for the most vulnerable members of their community.

In response to the COVID-19 pandemic in early 2020, Catholic Charities paired with the City of Tampa to open a temporary emergency shelter for local unhoused residents. Along with the support of the interfaith community, local businesses, non-profit organizations, and neighbors came together to create a safe space for Tampa's homeless population.

In addition to the 100 tents comprising the Pinellas Hope site in Hillsborough County, Catholic Charities and city officials announced in December 2021 that more resources were needed to meet the needs of Tampa's growing unsheltered population. This decision led to Tampa Hope: a village located a few miles east of the Ybor City neighborhood set to provide shelter to 200 homeless residents, half of which were provided by Pallet.

Pallet shelters, referred to at the site as Hope Cottages, are an ideal interim, non-congregate solution to weather the sweltering heat and storm-prone climate of Florida. The Shelter 64 HD units occupied by 100 residents of the Tampa Hope village are able to withstand 170 mph winds and are equipped with heating and air conditioning, making them a safe, secure space for people to rest and recharge even in extreme conditions.



"Improving access to housing for all Tampa residents is a central part of our Transforming Tampa's Tomorrow strategy, and I am so proud and grateful to be working with Catholic Charities on this compassionate and innovative program to help people along the path to self-sufficiency," Tampa Mayor Jane Castor said. "It's great to see Tampa booming with economic growth and luxury development, but the Tampa City Council and I believe firmly that this city's success depends on improving the quality of life for every Tampa resident no matter their current economic status. Tampa Hope will improve and save lives."

Residents of the Hope Cottages not only have their own private space with a bed, desk, and locking door, they can also easily access onsite supportive services such

as case management, mental health assessment, basic medical and dental care, substance use counseling, transportation and housing assistance, employment assistance, and financial counseling. They are also provided with basic amenities like hygiene and laundry facilities, three meals a day, toiletries, and clothing.

The next step in the project is to add another 100 Hope Cottages from Pallet to the village, offering more safe and dignified shelter opportunities for Tampa's homeless population. The collaboration between Catholic Charities, city leaders, and neighbors makes Tampa Hope a shining example of a resilient community that came together to support its most vulnerable members.

We believe these Hope Cottages are a great starting point in helping rebuild lives. Tampa Hope is a place where you can stay off the streets and find safety and a true support network to lift you up when you need it most.

MAGGIE ROGERS

EXECUTIVE DIRECTOR OF CATHOLIC CHARITIES OF THE DIOCESE OF ST. PETERSBURG

Site Features:

- 100 heavy duty Pallet shelters with 170 mph wind ratings and climate control options
- Hygiene and laundry services
- Onsite meals
- Onsite case management, medical and mental health services, substance use counseling, and transportation
- Employment/housing support and financial counseling
- Clothing and toiletries

